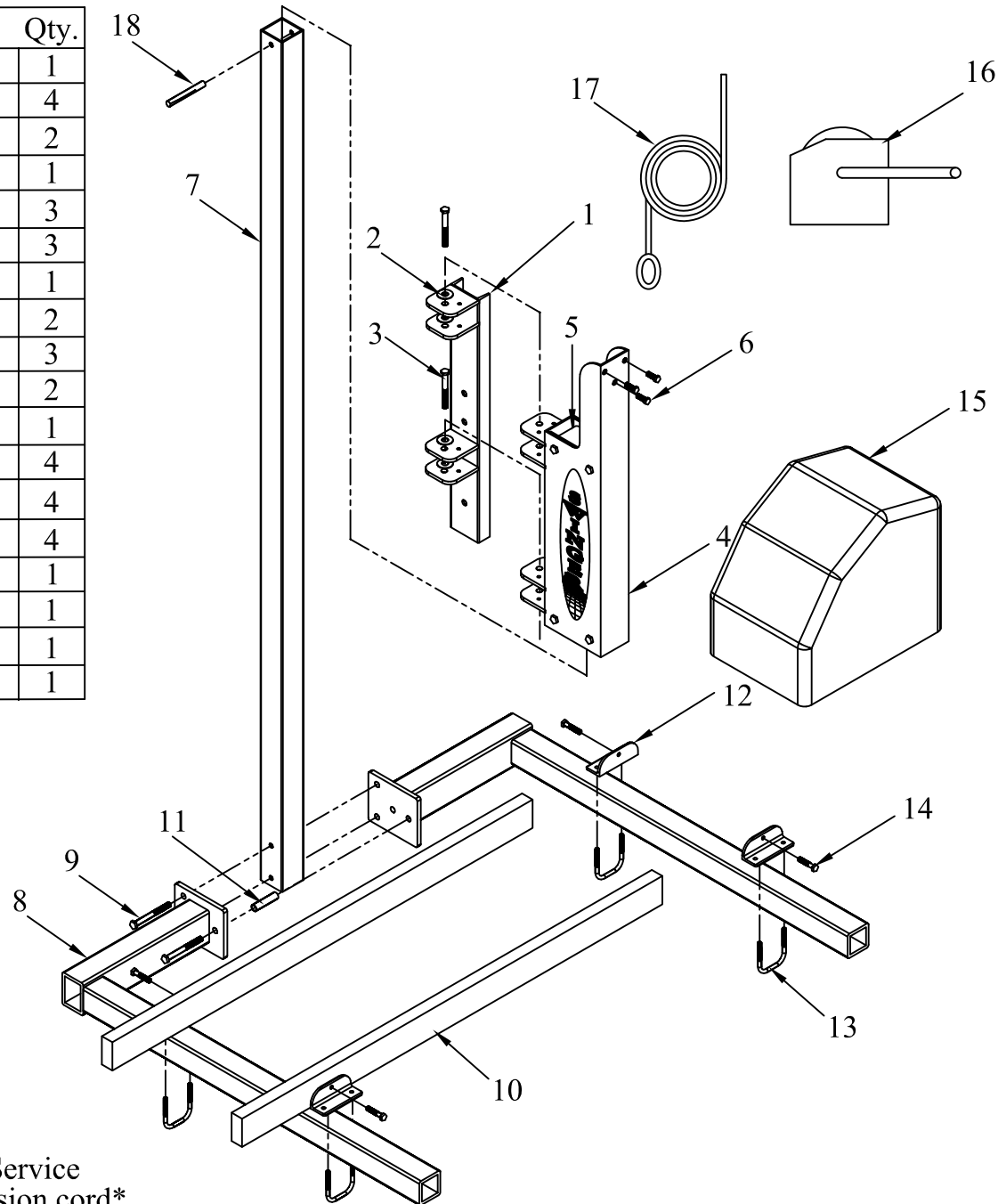


1000# SWINGER PILING MOUNT PART BREAKDOWN

Part #	Description	Qty.
1	Piling Mt. Bracket	1
2	Swivel Bushings	4
3	5/8" x 4.5" Bolt	2
4	Housing	1
5	2" x 2.75" Roller	3
6	1/2" x 2" Bolts	3
7	Mast	1
8	Cradle Arms	2
9	5/8" x 5 1/2" Bolt	3
10	Bunk Board	2
11	Alum. 3" Spacer	1
12	Bunk Bracket	4
13	3/8 U-Bolt	4
14	3/8" x 3" Bolt	4
15	Electric Winch	1
16	Manual Hoist	1
17	1/4" Cable	1
18	Safety pin	1

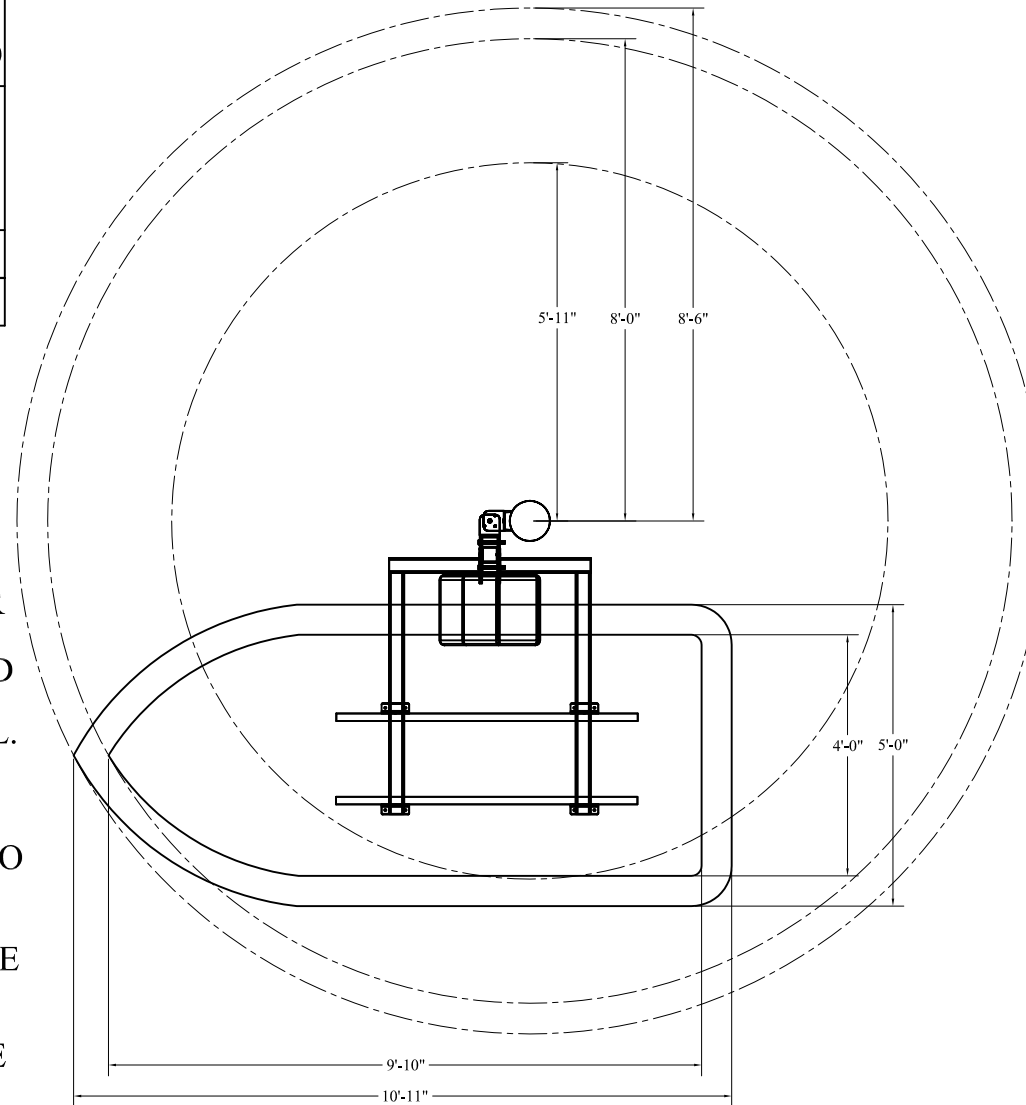


Note: Requires 20 Amp Service
 Will not operate with extension cord

INFORMATION SHEET

LIFT SPECIFICATIONS	
PILING DIAMETER	8" MIN.
PILING HEIGHT ABOVE SURFACE	30" MIN. 32" PREFERRED
MAXIMUM WIDTH PERSONAL WATERCRAFT	60"
MAXIMUM WEIGHT	1000 lbs.
Lift Travel	8'

* TRAVEL IS MEASURED FROM THE BOTTOM OF THE SWINGER HOUSING TO THE BOTTOM OF THE ARM PLATE. EXTENDED MAST ARE AVAILABLE FOR FOR 2' OF ADDITIONAL TRAVEL. WHEN CHOOSING LOCATION FOR YOUR LIFT. MAKE SURE THE LOCATION OF THE PILING HAS ADEQUATE CLEARANCE TO ROTATE YOUR WATERCRAFT. REFER TO THE ILLUSTRATION FOR THE MINIMUM CLEARANCE REQUIRED TO ROTATE YOUR PERSONAL WATERCRAFT. THE PILING THAT YOU CHOOSE SHOULD BE SECURED TO THE DOCK, SEAWALL, OR BULKHEAD. THE LIFT WILL NOT OPERATE PROPERLY ATTACHED TO A FREE STANDING PILING.

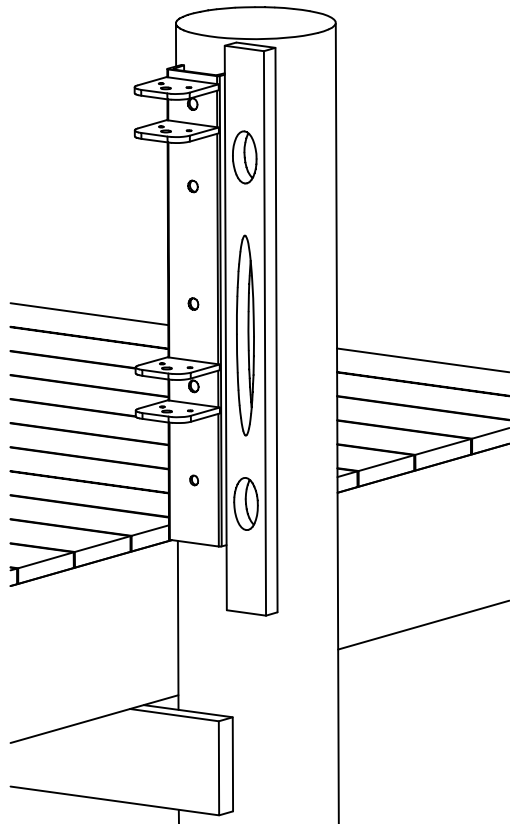


STEP 1: SWINGER PILING MOUNT INSTALLATION

Due to variation in piling diameter
5/8" bolts not supplied

1. The first step in installing your lift is attaching the piling mount to the piling. You will need a 5/8" drill bit, 5 bolts (5/8" diameter and 2" min. longer than your piling diameter) and wrenches to fit the 5/8" bolts. (5/8" bolts not supplied)
2. Your piling height should be a min. of 32" from the decking surface. (AS SHOWN IN FIGURE C)
3. The piling mount bracket has one end with the channel extending below the hinge bracket. That is the bottom of the piling mount. The bottom of the swivel hinge should be 10" from the decking or surface that the lift will be rotating over. (AS SHOWN IN FIGURE C)
4. Place the piling mount against the piling and use a level to get the piling mount square and plumb on the piling. (AS SHOWN IN FIGURE A) After you achieve this, mark the piling mount hole pattern.
5. Remove the piling mount and drill the holes as straight as possible with a 5/8" diameter drill bit. Drill bit should be same size as the bolt to prevent the piling mount from tilting.
6. Then attach the piling mount to the piling using 5/8" bolts 2" (min.) longer than the piling diameter. (Not supplied)
Note: Bolts will have to be driven through the hole in the piling with a hammer.
7. Last, place washer on the back side of the piling (AS SHOWN IN FIGURE B) and tighten as tight as possible.
(Periodically tighten bolts to compensate for piling shrinkage.)

Figure A



3"X3"X1/4" SQUARE WASHER

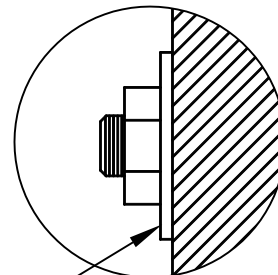
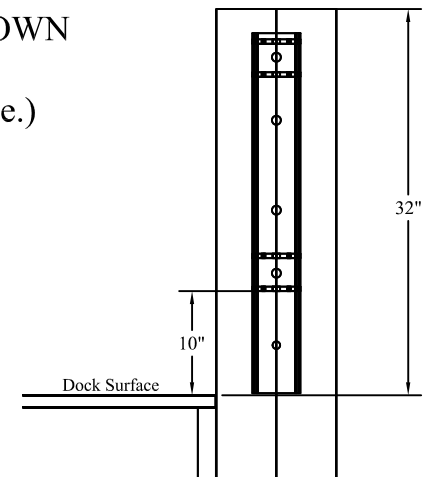


Figure B

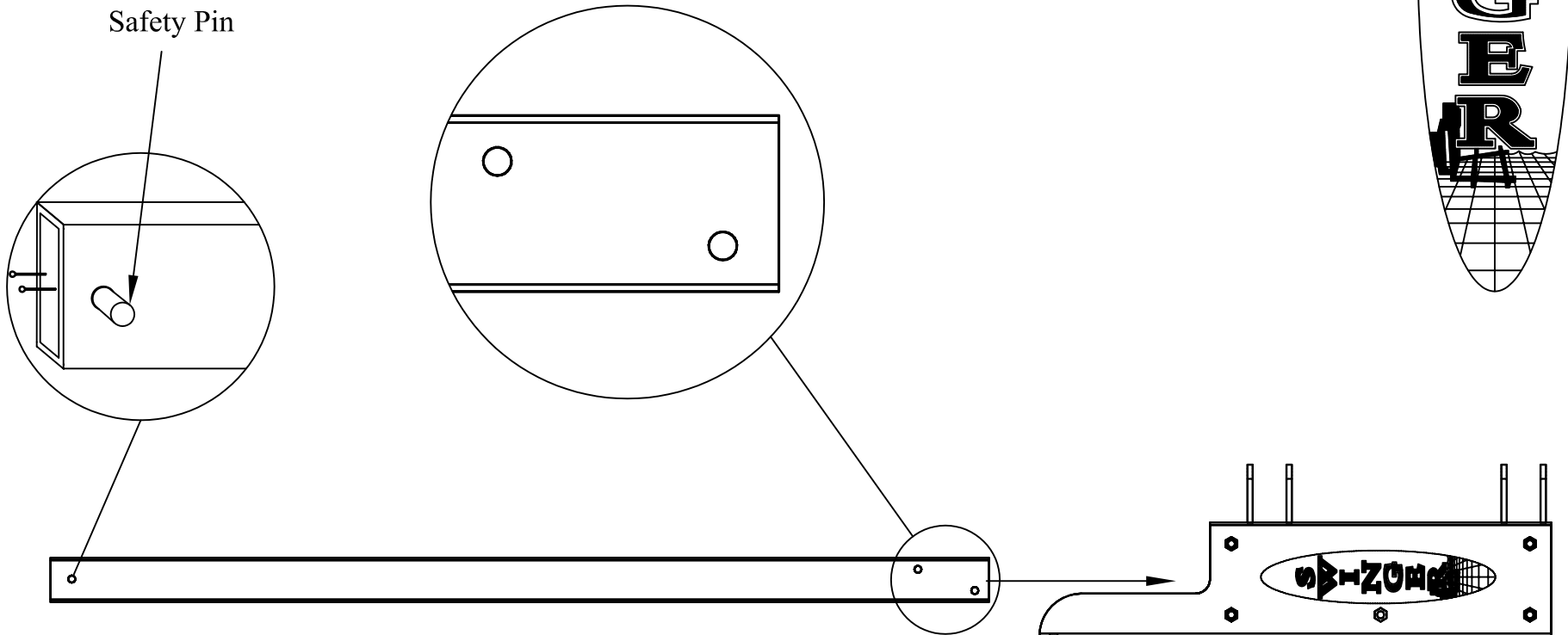


Figure C



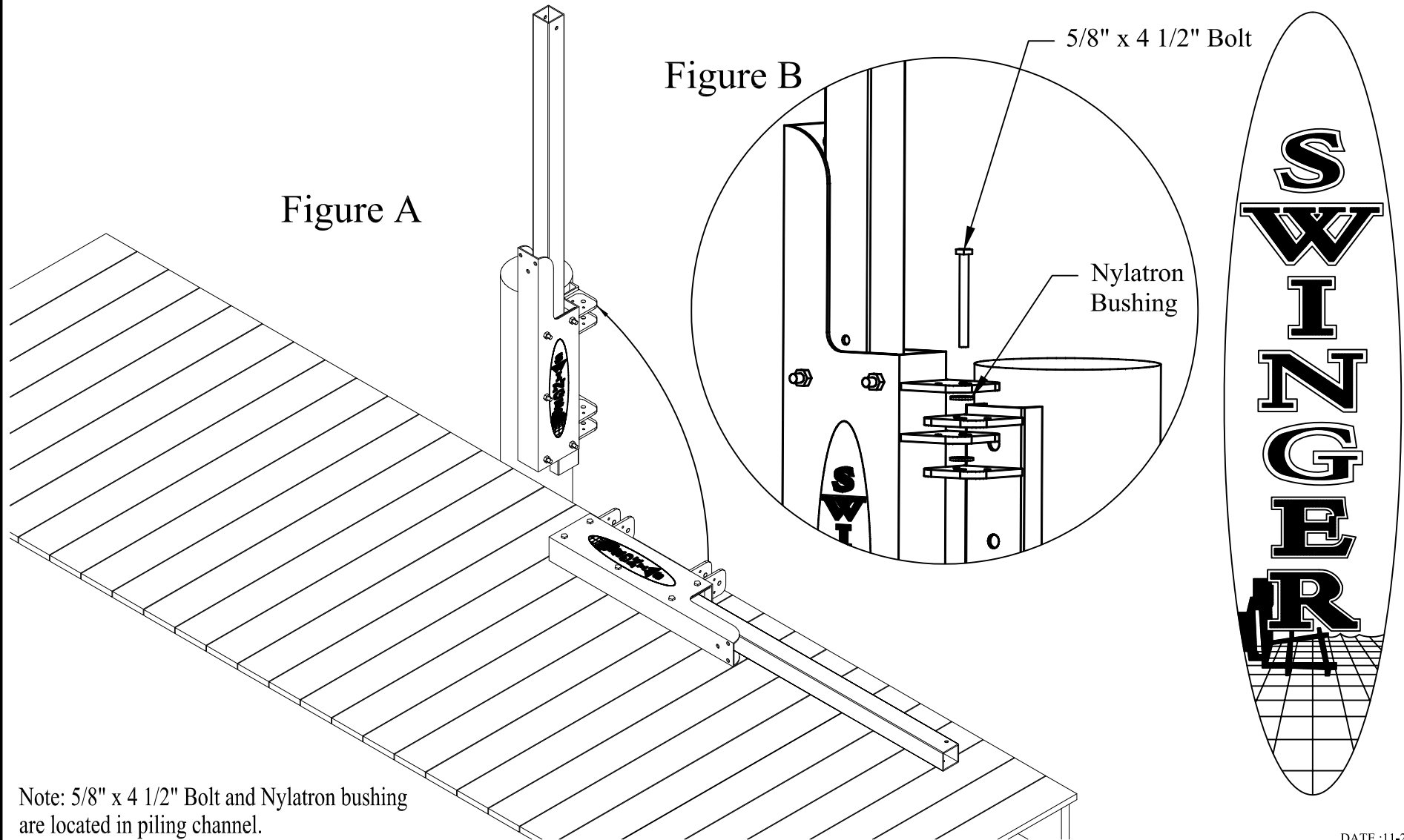
STEP 2: MAST INSTALLATION

1. Insert the mast into the top of the housing making sure that the two holes in the bottom of the mast are oriented as shown in the illustration below.
2. The two holes in the bottom of the mast are offset to provide rake support when the arms are attached and the load of the watercraft is applied. (Rake in arms is designed to compensate for cantilevered load.)
Note: If arms are tilted down, remove mast from housing, rotate 180 degrees and reinsert mast.



STEP 3: MAST INSTALLATION

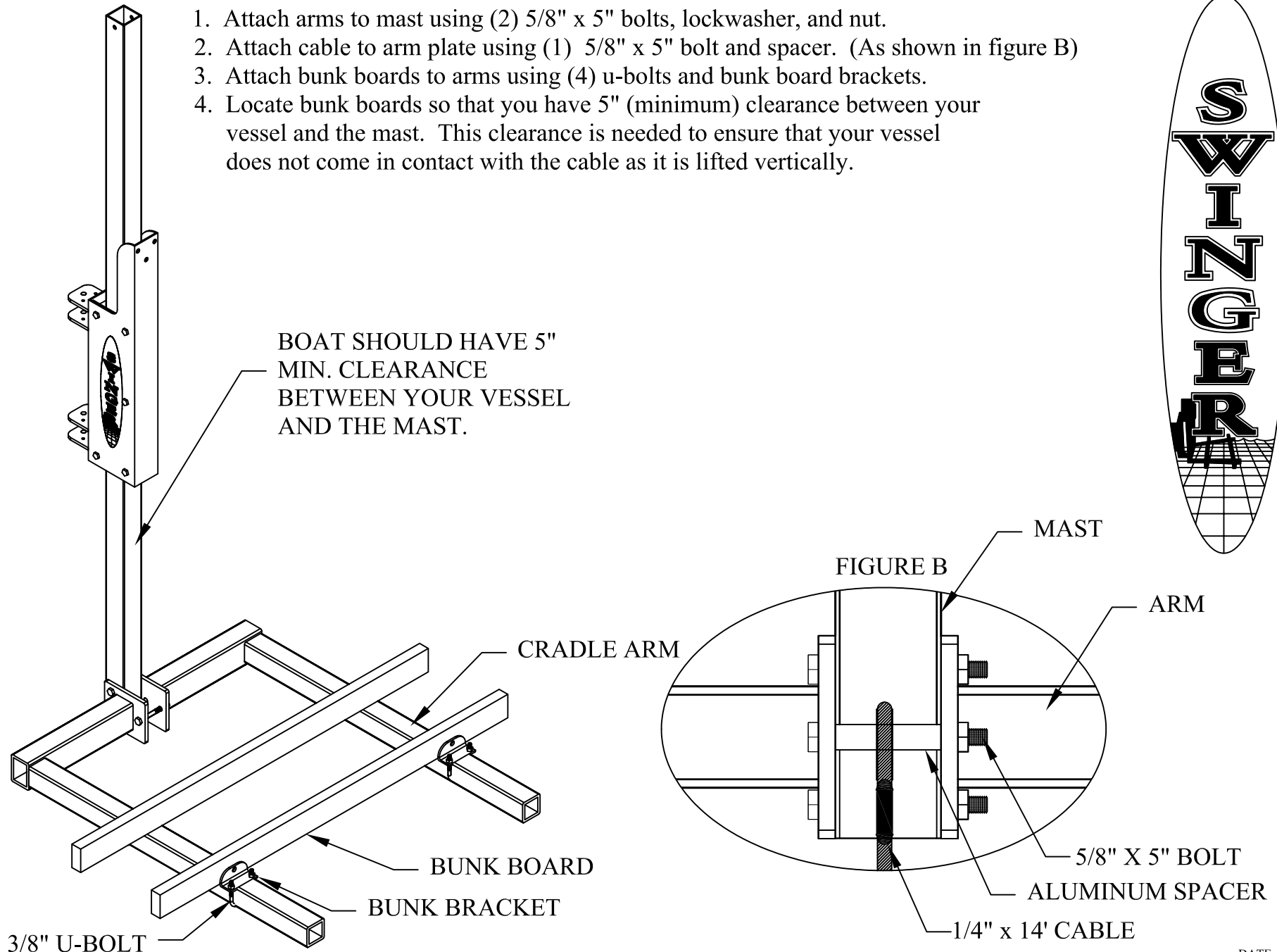
1. Position housing close to piling mount bracket, attached to piling.
2. Stand housing and mast assembly upright. (As shown in figure B)
3. Align swinger brackets on the housing above swinger brackets on the piling mount. (As shown in figure A)
4. Separate piling mount swivel hinges from housing swivel hinges using supplied nylatron bushing. (As shown in figure A)
5. Insert 5/8" x 4 1/2" bolts to secure housing and mast assembly to piling mount bracket . (As shown in figure A)



Note: 5/8" x 4 1/2" Bolt and Nylatron bushing are located in piling channel.

STEP 4: ARM & BUNK ASSEMBLY

1. Attach arms to mast using (2) 5/8" x 5" bolts, lockwasher, and nut.
2. Attach cable to arm plate using (1) 5/8" x 5" bolt and spacer. (As shown in figure B)
3. Attach bunk boards to arms using (4) u-bolts and bunk board brackets.
4. Locate bunk boards so that you have 5" (minimum) clearance between your vessel and the mast. This clearance is needed to ensure that your vessel does not come in contact with the cable as it is lifted vertically.



STEP 5: HOIST & CABLE ASSEMBLY

1. Attach cable to PSI drive unit by loosening set screw located in drive spool. (Drive spool may have to be rotated before loosening. To rotate drive spool rotate large drive pulley with your hand until the spool is in the desired location.)
2. Insert cable into hole located to the inside of the drive spool.
3. After cable is inserted past the set screw, tighten set screw onto cable. (Pull slightly on cable to ensure cable is secure)
4. Wind cable onto the spool by keeping tension on the cable and running drive in the upward motion. (Be sure cable is wrapped neatly on the cable spool.)

